

## Bespoke Management Programmes

Create your own learning path and goals with the best industry fit

PGDM  
PGDM Finance  
PGDM International Business

Approved by AICTE & Accredited by SAQS

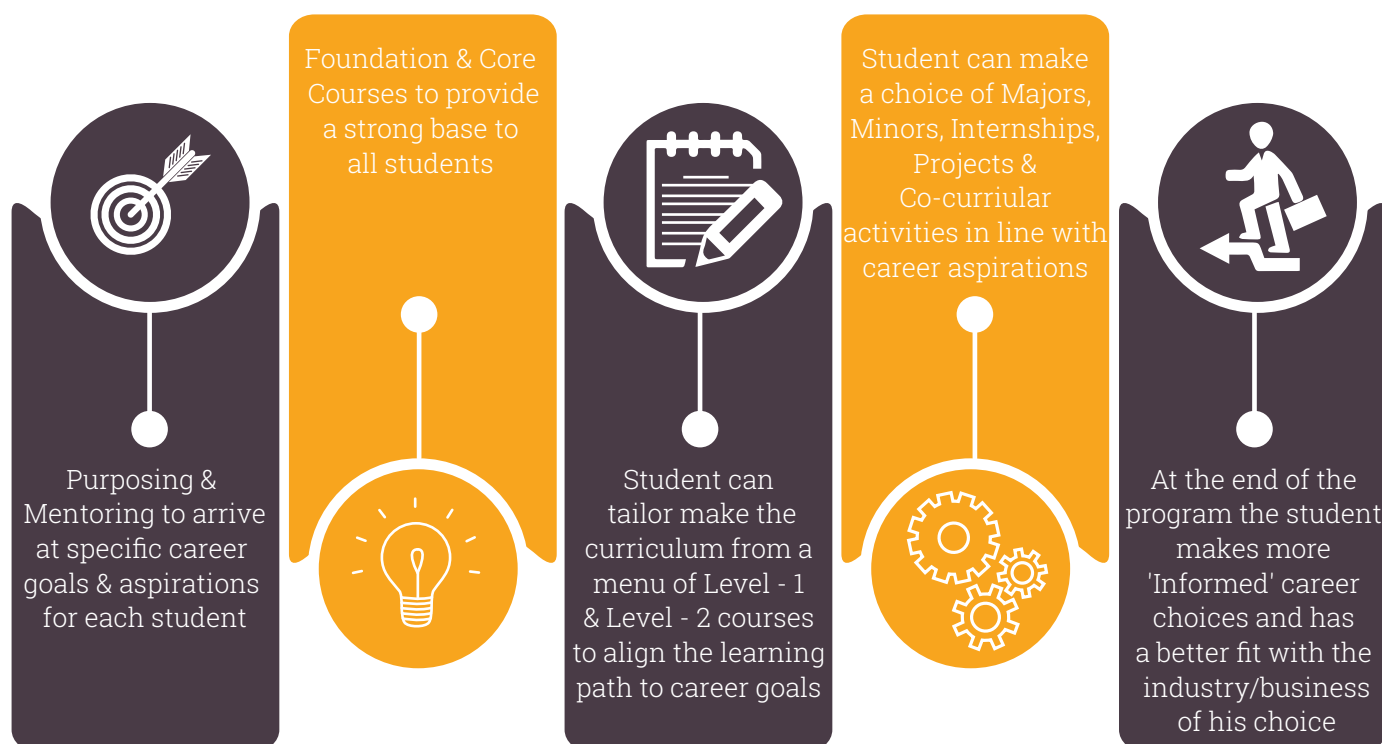
Full-time, two-year programme with  
class-leading specializations in Marketing,  
Finance, Human Resources, International  
Business, Entrepreneurship, Business Analytics,  
Banking & Financial Services and Capital Markets

# Bespoke Management Programmes

IFIM Business School's Bespoke pedagogy empowers the student to create one's own learning path and career goals for fulfilling one's aspirations, thereby creating a better fit for business/industry compared to other 'Generic Management Programmes' that are rigid and inflexible in their approach. IFIM is the only institution with a completely flexible PGDM program, patterned on leading international B-Schools, which has been very well appreciated by the corporates as they get highly focused resources.

Parameter	Generic Management Programmes	IFIM Business School's Bespoke Management Programmes
Curriculum Design	Rigid	Flexible
Learning Path	Standardized	Specific to Career Goals
Student Orientation	One size fits all	Customized to individual needs
Career Focus	Generalized	Personalized
Corporate Fit	Generic and Diffused	Specific and Focused

## How IFIM's Bespoke Management Programmes Work



**Get empowered. Experience learning for YOU at IFIM.**



Recognized by



CFA Institute



Accredited by



Member of



# IFIM Institutions

IFIM Institutions was established in 1995 by Centre for Developmental Education (CDE). CDE now has leading academic institutions including IFIM Business School, IFIM College, IFIM Law College, IFIM Institute of Social Sciences and IFIM Centre for Distance Learning.

## IFIM Business School

IFIM Business School was the first institution established by CDE in 1995. Over two decades, it has grown to be a force to reckon with in the region. Consistently been ranked among the top 1% business schools in India, IFIM is striving to become the leading management institution providing Bespoke Management Programmes in the world.

Some of the distinguishing features that set IFIM head and shoulders above its peers include,

- 1) Faculty with a perfect blend of industry and academic experience
- 2) International collaborations with top B-Schools for faculty and student exchange programs
- 3) Internationally recognized flexible curriculum patterned on Stanford Business School structure
- 4) Bespoke learning experience that is tailored to individual needs of every student

IFIM Business School's unique location in Electronics City, Bangalore, surrounded by leading names of the IT and manufacturing industries, along with some of the biggest startups, ensures a conducive environment for an effective industry connect through corporate mentoring, industry visits, industry guest lectures and industry-academia collaborative events.

With an industry connect that bridges the gap between classroom learning and practical experience, IFIM management graduates receive excellent placement offers from the top companies with excellent work profiles. We invite you to become a part of the journey of knowledge and experience at IFIM Business School.

## Recognized by the Best

- **Ranked No.28 in India amongst Best Business Schools** by 'Business India' magazine, 2016
- **Gold Award winner** at the 7th Indian Management Conclave, 2016 at IIM Ahmedabad
- Ranked amongst the **Top 3 Business Schools in Bangalore** by 'Outlook India' magazine, 2016
- **Best Higher Education Institute of the Year-South** by ASSOCHAM, 2016
- Honoured as an **Outstanding Business School (South)** at the National Education Awards, 2015
- Recognized as the **Most promising B-School with Excellent Industry Interface** at the Asia Education Summit 2015





# IFIM Advantages



## Truly International

IFIM has tie-ups with leading B-Schools and Universities across the globe in countries like USA, Australia, France, Germany, UK, Singapore, etc. for student exchanges and immersions, exposing students to best practices across the world.



## Flexible Curriculum Allows Personalization

IFIM is the only institution with a completely flexible PGDM program that empowers the students to create their own learning paths to fit their career aspirations. Patterned on leading international B-schools, the program has been well appreciated by the corporates.



## Dual Mentorship Program

IFIM Business School provides an enriching corporate and faculty mentorship programme for all students to enable them to choose their career path and motivate them to achieve 200% of what they think they are capable of.



## Social Immersion Program (SIP)

Social responsibility awareness is created by enabling students to design solutions for social problems through a Techno Economic Viability study and execution, thereby leading to sustainable and measurable positive social impact.



## Extensive Industry Internship Program (IIP)

IFIM has a unique industry internship program (with double the standard summer internship) enabling a 'laboratory experience' for the students to 'learn by doing', in a real corporate work environment. In fact, several corporates have sponsored labs in the campus to train students from day one, including IBM Business Analytics lab, Prabhudas Lilladher Finance lab and Bloomberg Trading Terminals, etc.



## Professional Tie-ups

IFIM has tie-ups with professional organizations like CFA Institute of USA, NASSCOM, NSE, Toast Masters International, NEN, LEDMAC, National HRD Network, EDII, etc. allowing our students to regularly interact with corporate who's-who and get exposed to cutting-edge topics that impact business environment.



## International Research Publication by Students

IFIM takes pride in being the first Business School where each student is expected to author original research publication based on the research projects that they conduct, to be published in top international journals.

Students from leading international universities visit IFIM and vice-versa as a part of global management learning



## Corporate Mentors



**Avneet Gupta**  
Associate Director - FSS, South ESU - IBM India Private Limited

"It is a fabulous initiative by IFIM going beyond education to caring by connecting students to industry, and helping them get an insight and guidance before they make their choices in their career. It is about making them believe in themselves and provide a framework on how to achieve their objectives and realize their dreams !!!"

"My mentoring experience at IFIM Business School has been fabulous. Corporate mentors bring in loads of experience while the mentees bring in immense amount of energy and desire to learn, enabling students to map their desired career path. The corporate mentor gets to personally interact with every student and understand their passion, aspirations and dream job, and go on a journey of exploration to help them achieve their goals. It is a truly fulfilling experience."



**Surya Mohapatra**  
Global Head - Talent Transformation - Wipro BPS



**Edwin Moses**  
Group VP - Oracle Financial Services

"I see in this program yet another proof of IFIM's commitment in enabling its students to constantly find ways and means to weave the classroom with the real world. I have found this platform to one, which enables the student to grow in understanding and gain confidence in preparing themselves to be the leaders of tomorrow."

"Mentoring is a very unique methodology of getting industry interactions with the students and I found this exercise very interesting. The students I worked with had interesting questions and I also had a few learning opportunities through this program. Wish IFIM continues to do this with the same rigour and purpose"



**Chandramouli Srinivasan**  
Vice President - Feedback Consulting



**Naresh Sadasivan**  
Founder & CEO - Zeyga Pte Ltd.

"IFIM's Corporate mentorship is one of its kind and is adorable. It is a wonderful platform where students can leverage immense experience of corporate leaders who guide them in identifying strengths and traits which help in realizing their career aspirations/goals. Being a mentor, it was a rewarding experience for me to see talent transformation into action and also learn from them. Kudos to IFIM for organizing this and helping the future leaders realize their dreams."

## Recruiters



**Ivy Saldanha**  
Director - Human Resources - Actuant Corporation

"We at Actuant always endeavor to hire the agile talent to support our growth strategy and meet our global requirements. We hired IFIM student and found the quality of talent is far superior. I am proud to say that IFIM Business School provides holistic education, which helps the students to hone all necessary professional skills that they can apply with ease in the professional organization."

"Been associated with IFIM for a couple of years now informally in the capacity of Corporate-Academia Relationship Executive. The hospitality extended by the institution has been exceptional. Catapulting careers of the students hired from IFIM is indicative of the quality of students that are graduating from this Institution. This definitively is proportional to the expertise & scholarship of the faculty that are nurturing students!"



**Udaya Kumar Kannan**  
Manager - Talent Acquisition - Hinduja Global Solutions

## Indicative list of Recruiters

- |                                                                                                                                                                                                                                                                                                                                                                                                                                                                                                                                                                                                                                                                                                                                                                                                                                                                                |                                                                                                                                                                                                                                                                                                                                                                                                                                                                                                                                                                                                                                                                                                                                                                             |                                                                                                                                                                                                                                                                                                                                                                                                                                                                                                                                                                                                                                                                                                                                                                                                                                                                                                                                                                                                          |
|--------------------------------------------------------------------------------------------------------------------------------------------------------------------------------------------------------------------------------------------------------------------------------------------------------------------------------------------------------------------------------------------------------------------------------------------------------------------------------------------------------------------------------------------------------------------------------------------------------------------------------------------------------------------------------------------------------------------------------------------------------------------------------------------------------------------------------------------------------------------------------|-----------------------------------------------------------------------------------------------------------------------------------------------------------------------------------------------------------------------------------------------------------------------------------------------------------------------------------------------------------------------------------------------------------------------------------------------------------------------------------------------------------------------------------------------------------------------------------------------------------------------------------------------------------------------------------------------------------------------------------------------------------------------------|----------------------------------------------------------------------------------------------------------------------------------------------------------------------------------------------------------------------------------------------------------------------------------------------------------------------------------------------------------------------------------------------------------------------------------------------------------------------------------------------------------------------------------------------------------------------------------------------------------------------------------------------------------------------------------------------------------------------------------------------------------------------------------------------------------------------------------------------------------------------------------------------------------------------------------------------------------------------------------------------------------|
| <ul style="list-style-type: none"> <li>• Abbott India Ltd.</li> <li>• ACT</li> <li>• American Express</li> <li>• Actuant India</li> <li>• Axis Bank</li> <li>• Berger Paints India Ltd.</li> <li>• Biocon</li> <li>• Bosch India</li> <li>• Boston Technology</li> <li>• Britannia Industries Ltd.</li> <li>• Canon India Pvt. Ltd.</li> <li>• Capital First Limited</li> <li>• Citibank</li> <li>• CMS</li> <li>• Copal Amba Research</li> <li>• CRISIL Global Research &amp; Analytics</li> <li>• Decathlon</li> <li>• Dell India</li> <li>• Deloitte Consulting India</li> <li>• DTDC</li> <li>• Eclerx</li> <li>• Edelweiss</li> <li>• Envision Financial Systems</li> <li>• Ernst &amp; Young</li> <li>• FedEx</li> <li>• Flipkart</li> <li>• Franklin Templeton</li> <li>• Fuji Films India Pvt. Ltd.</li> <li>• GATI Ltd.</li> <li>• Genpact India Pvt. Ltd.</li> </ul> | <ul style="list-style-type: none"> <li>• Godrej Ltd.</li> <li>• Grant Thornton</li> <li>• H &amp; R Johnson (India)</li> <li>• HDFC Group</li> <li>• HGS</li> <li>• Hindustan Coca Cola Beverages</li> <li>• HP</li> <li>• IBM</li> <li>• ICICI Group</li> <li>• Idea Cellular Ltd - Aditya Birla Group</li> <li>• IKYA Human Capital Solutions</li> <li>• Indiabulls</li> <li>• IndusInd Bank</li> <li>• ID Foods</li> <li>• Infosys</li> <li>• Janalakshmi Financial Services</li> <li>• Jaro Education</li> <li>• JP Morgan</li> <li>• Just Dial</li> <li>• Kotak Group</li> <li>• KPMG</li> <li>• L&amp;T</li> <li>• Madisson Media</li> <li>• Mercedes Benz</li> <li>• Minacs</li> <li>• Mindtree</li> <li>• Nestle</li> <li>• Neudesic</li> <li>• New Wave</li> </ul> | <ul style="list-style-type: none"> <li>• NTT Data</li> <li>• Optimal Strategix Consulting</li> <li>• Oracle India Pvt. Ltd.</li> <li>• Piaggio India</li> <li>• PM Cuisine Lube India Pvt. Ltd.</li> <li>• Prabhudas Liladhar Pvt. Ltd.</li> <li>• Practo</li> <li>• Purvankara Projects Ltd.</li> <li>• PWC</li> <li>• Rane Group</li> <li>• Richcore Lifesciences Pvt. Ltd.</li> <li>• Rotomotive Powerdrives India Ltd.</li> <li>• S &amp; P Capital IQ</li> <li>• Sakra World Hospital</li> <li>• SAP Labs India</li> <li>• SG Analytics Pvt. Ltd.</li> <li>• Siemens India</li> <li>• Societe Generale</li> <li>• Standard Chartered Bank</li> <li>• State Bank of India</li> <li>• State Street Services India Pvt. Ltd.</li> <li>• Steel Authority of India Ltd.</li> <li>• Target</li> <li>• TAS Analytic Services</li> <li>• Toyota Kirloskar Motor Pvt. Ltd.</li> <li>• VIP Industries</li> <li>• Vistaar Financial Services</li> <li>• Vodafone</li> <li>• Wipro</li> <li>• Zomato</li> </ul> |
|--------------------------------------------------------------------------------------------------------------------------------------------------------------------------------------------------------------------------------------------------------------------------------------------------------------------------------------------------------------------------------------------------------------------------------------------------------------------------------------------------------------------------------------------------------------------------------------------------------------------------------------------------------------------------------------------------------------------------------------------------------------------------------------------------------------------------------------------------------------------------------|-----------------------------------------------------------------------------------------------------------------------------------------------------------------------------------------------------------------------------------------------------------------------------------------------------------------------------------------------------------------------------------------------------------------------------------------------------------------------------------------------------------------------------------------------------------------------------------------------------------------------------------------------------------------------------------------------------------------------------------------------------------------------------|----------------------------------------------------------------------------------------------------------------------------------------------------------------------------------------------------------------------------------------------------------------------------------------------------------------------------------------------------------------------------------------------------------------------------------------------------------------------------------------------------------------------------------------------------------------------------------------------------------------------------------------------------------------------------------------------------------------------------------------------------------------------------------------------------------------------------------------------------------------------------------------------------------------------------------------------------------------------------------------------------------|

## Scholarships 2017 @ IFIM

The Padode Foundation awards Merit Scholarships each year to students with excellent achievements in academics/sports arena. The scholarships are awarded to students who are pursuing PGDM programs at IFIM Business School. To know more on the terms and conditions for all scholarships, please visit [www.ifimbschool.com](http://www.ifimbschool.com)

Category	Super Scholar (5 Nos.)	Academic Excellence (5 Nos.)	Academic Scholar (10 Nos.)	Sports (10 Nos.)
Quantum of Scholarship	100%	50%	25%	25%
CAT 2016 (in percentile)	90	85	75	65
GMAT (in score)	750	700	650	650

## Admissions Eligibility

- Bachelor's degree from a recognized university with a minimum aggregate of 50% in all subjects (45% for SC/ST candidates).
- Should have scored well and qualified in one of the entrance examinations: CAT/XAT or GMAT.





IFIM Campus



Class in Session



Prabhudas Lilladher Lab



Corporate Mentoring



Recruitment Drive



Social Immersion Programme



Social Initiatives



IFIM Hostel



## Courses offered by IFIM Institutions

Institutions	Courses	Affiliation/ Approved by	Mode of Study	Duration
<b>IFIM Business School</b>	PGDM	Approved by AICTE & Accredited by SAQS	Full-time	2 Years
	PGDM (Finance)		Full-time	2 Years
	PGDM (International Business)		Full-time	2 Years
	Executive PGDM (Business Analytics)	AICTE	Part-time	15 Months
	PGDM (for Working Professionals)	AICTE/DEB/UGC	Weekend	2 Years
	Certificate in Entrepreneurship Management	EDII	Part-time	6 Months
	PG Certificate in Global Financial Markets	NSE	Part-time	11 Months
	Ph. D.	VTU	External	
<b>IFIM College</b>	BBA	Affiliated to Bangalore University Accredited with 'A' Grade by NAAC	Full-time	3 Years
	BCA		Full-time	3 Years
	B. Com.		Full-time	3 Years
	BA (Journalism)		Full-time	3 Years
	M. Com.		Full-time	2 Years
<b>IFIM Law College</b>	BBA., LL.B.	KSLU/BCI	Full-time	5 Years
<b>IFIM Centre for Distance Learning</b>	PGDM Finance in Capital Markets & Banking	AICTE/DEB/UGC	Distance	2 Years
	PGDM in Business Analytics	AICTE/DEB/UGC	Distance	2 Years
	PGDM General in Marketing, Finance & HR	AICTE/DEB/UGC	Distance	2 Years

Aspirants are encouraged to apply online at [www.ifimbschool.com](http://www.ifimbschool.com)



For more details, please contact  
Director-Admissions

**IFIM Business School**

#8P & 9P, KIADB Industrial Area

Electronics City Phase I, Bangalore - 560100

Tel.: 080-41432800/888 | Mobile: +91 9900067702/4/6

Email: [info@ifim.edu.in](mailto:info@ifim.edu.in) | [www.ifimbschool.com](http://www.ifimbschool.com) | [www.ifim.edu.in](http://www.ifim.edu.in)



/ifimpage



/ifimbs



/school?id=158008



/ifimbizschool